

Harrisonburg Vision & Action Plan

WORK-IN PROGRESS

Monday, December 9th, 4pm



**First Baptist Church
600 Bushley Street**

TODAY'S PRESENTATION

- Workshop Goals
- Workshop Recap
- Vision for the Future

BIG THANK YOU TO!

- Village of Harrisonburg (funding)
- Harrisonburg Service League (funding)
- Catahoula Parish Library (meeting space)
- First Baptist Church (meeting space)

***AND ALL THE PEOPLE THAT PARTICIPATED OVER THE
LAST 3 DAYS***

GOALS: PLANNING AND VISIONING WORKSHOP

1. Create a strategy for growth and retention moving forward

- How can Harrisonburg build on its existing assets?
- Can Harrisonburg become a destination in the region? What is missing from Harrisonburg?
- What can Harrisonburg do to retain existing residents? To attract new residents? New businesses?
- Can existing residents and business owners be inspired?

2. Create a preliminary future planning framework for the Village

- Create a document that can be used to guide and prioritize future private and public investments
- Create a document that can be used to facilitate outside funding

4-DAY PLANNING AND VISIONING WORKSHOP

	6-Dec	7-Dec	8-Dec	9-Dec	
	Friday	Saturday	Sunday	Monday	
9:00 AM		Visioning Session First Baptist Church 600 Bushley St	Walk-in "Office Hours" Catahoula Parish Library	Stakeholder Meeting	Walk-in "Office Hours" Catahoula Parish Library
10:00 AM				Stakeholder Meeting	
11:00 AM				Stakeholder Meeting	
12:00 PM		Team Lunch	Team Lunch	Team Lunch	
1:00 PM	Team Arrives / Meet & Greet	Downtown Walking Tour Meet at Catahoula Parish Library	Walk-in "Office Hours" Catahoula Parish Library	Walk-in "Office Hours" Catahoula Parish Library	
2:00 PM	Driving Tour				
3:00 PM		Team Brainstorming/ Additional Field Work	Stakeholder Meeting	Walk-in "Office Hours" Catahoula Parish Library	Work-in Progress Presentation First Baptist Church 600 Bushley St
4:00 PM	Walking Tour		Stakeholder Meeting		
5:00 PM			Stakeholder Meeting		
6:00 PM	Team Meeting		Team Meeting		
7:00 PM					

VISIONING SESSION



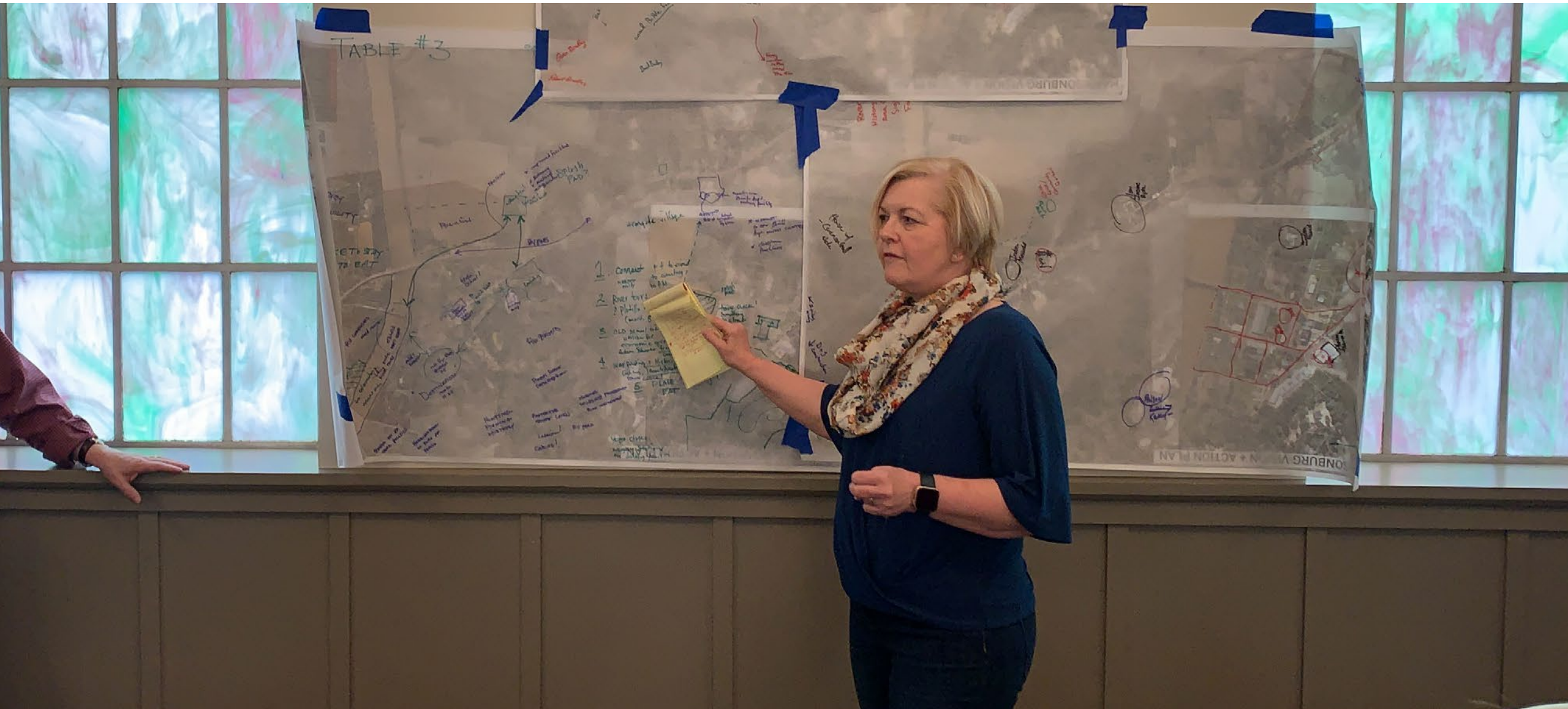
VISIONING SESSION



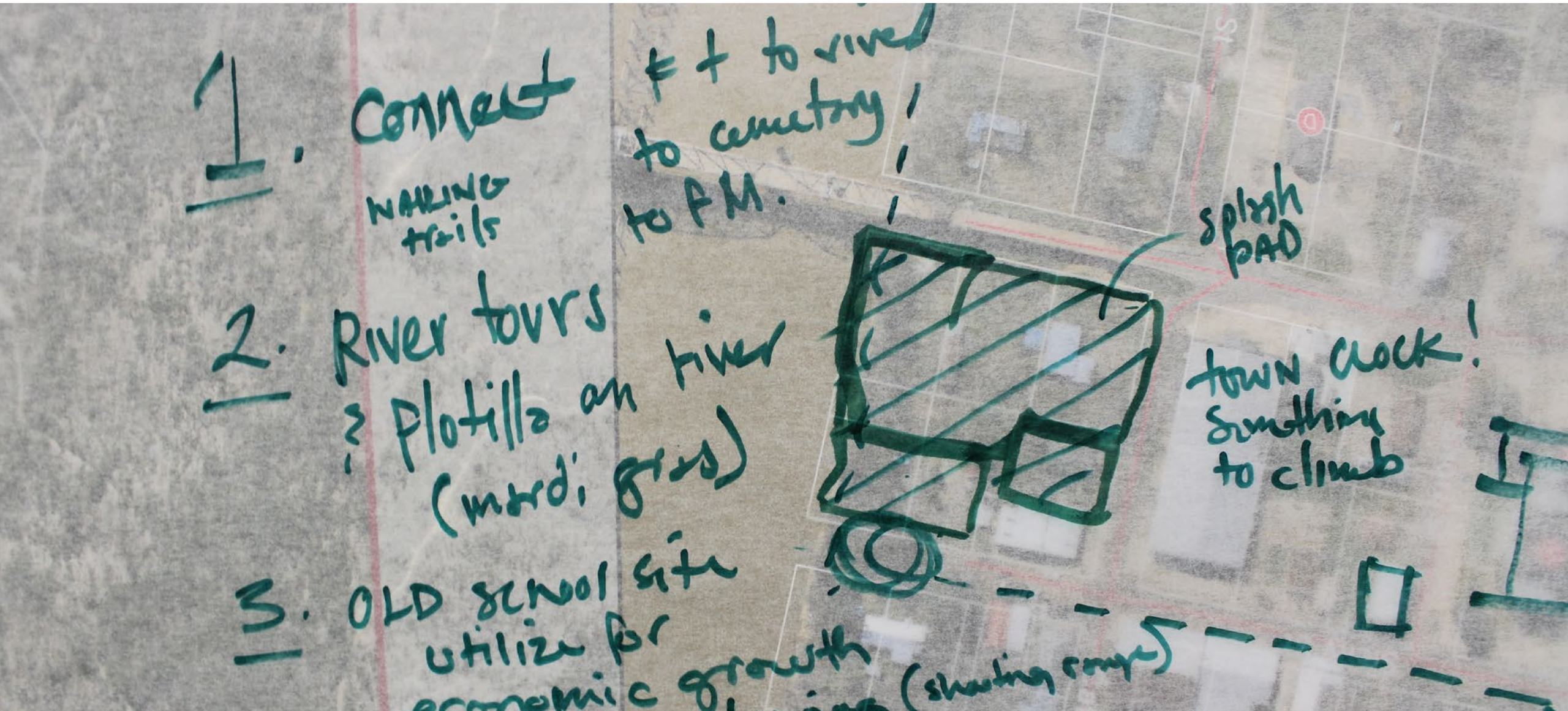
VISIONING SESSION



VISIONING SESSION



VISIONING SESSION

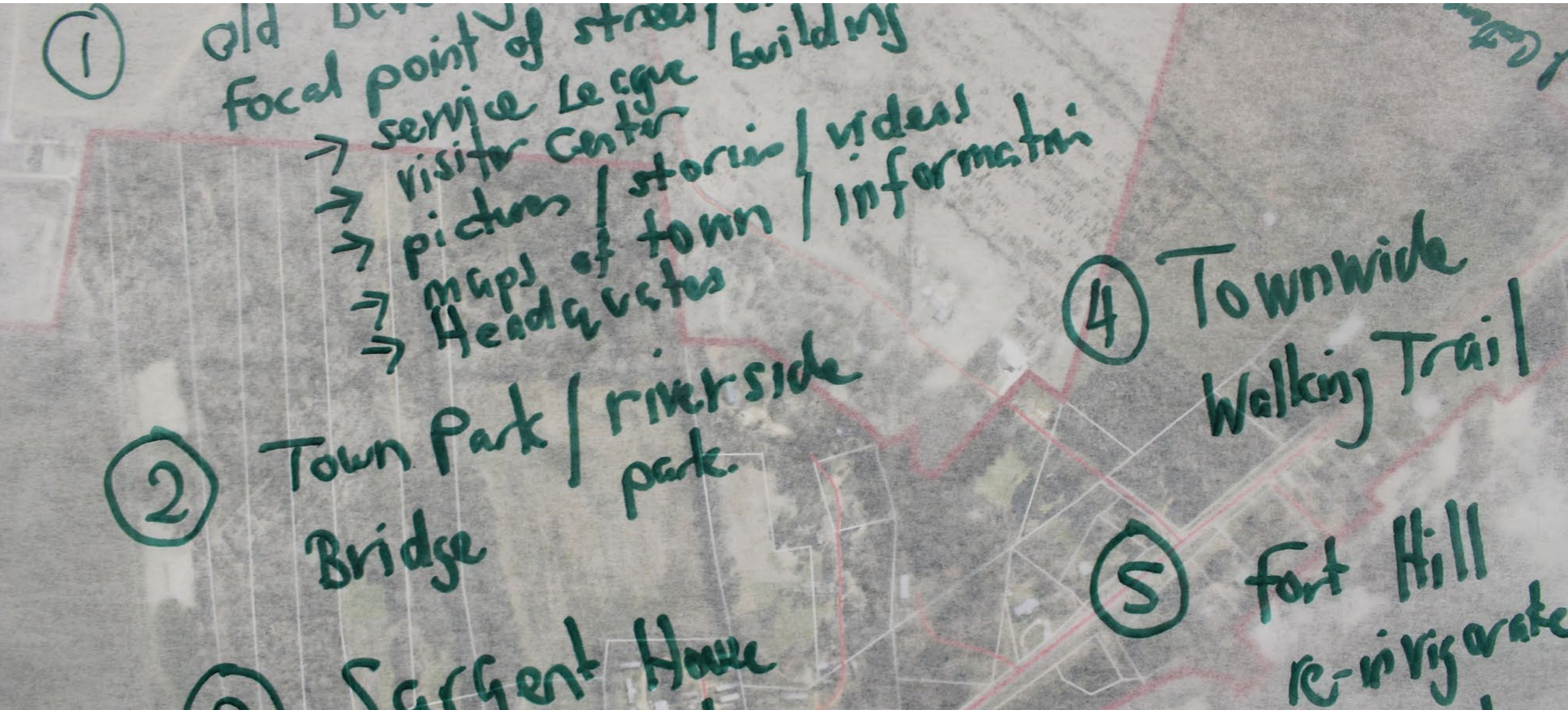


VISIONING SESSION

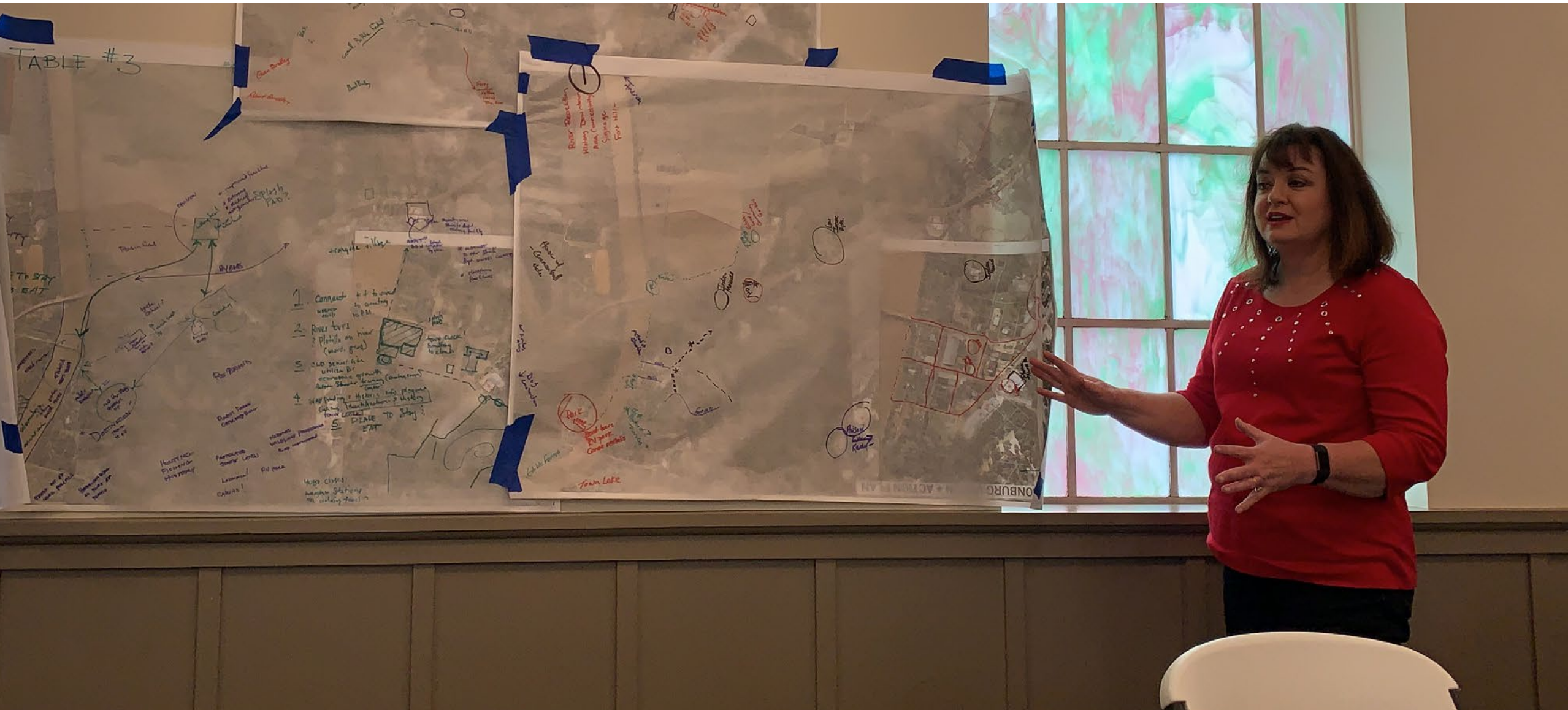


VISIONING SESSION

After



VISIONING SESSION



VISIONING SESSION

Before

TABLE 1

1. River Recreation

- » Tours, restaurants on the water, place to fish

2. Downtown

- » Connect to the walking trail, better lighting, add sidewalks, improve accessibility, golf carts
- » Lighting should not detract from seeing the stars at night from Fort Hill

3. Areawide Connectivity

- » The River, boat tours, canoe rentals, RV parks all connected, different walking trails

4. Revitalizing Fort Hill

- » How to connect to, schedule events/more programming, more activity up on the hill would make it safer

5. Signage

- » Gateway signage needed for Downtown from Highway 8
- » Historic wayfinding needed for Downtown
- » Historic informational signage needed

VISIONING SESSION

After

TABLE 2

1. Renovate the Old Beasley Building

- » Paint outside, fix bathrooms
- » Museum, historic pictures, stories, videos
- » Move artifacts from Courthouse
- » New focal point of Downtown
- » Catalyst - revitalization of Sicily
- » Need help selecting colors

2. New Riverfront Park

- » Turn land between Fire Station and old Bridge into a park
- » Improve old Bridge, make more accessible – add benches and interpretative history, Veterans memorial, old signs, history of the bridge

- » Basketball court, splash pad

- » Incorporate/connect to/reestablish the old ferry landing

3. Restore the Sargent House

- » Acquire the Sargent House
- » In disrepair, falling down – big part of the history of Harrisonburg that could be lost - needs to be saved

4. Town-wide Walking Trail

- » Walking trail from Farmer's Market through town, connect to Fort Hill

5. Fort Hill

- » Clear underbrush, see what the Fort looked like – so you can see the embankments, now you can't tell because of all the brush

VISIONING SESSION

TABLE 3

1. Connect to the River

- » Walking, hiking trail that connects the River to the Cemetery to the Farmer's Market

2. River Tours

- » Columbia to Harrisonburg
- » Events planned around when passengers get off
- » Flotilla on the river (Mardi Gras)
- » Could be a place for fishing guides

3. Old School Site

- » Utilize for economic growth
- » Active shooter training center by the Sheriff's Department – market to wider area
- » Incubator space for new businesses

- » Use for training opportunities for other local companies they may currently go out of the area because they lack meeting space

4. Historic Wayfinding

- » Plaques or kiosks that talk about the rich history of the area - Fort Beauregard Park & Downtown area.
- » Beautification and lighting – specifically Fort Beauregard – currently not well lit, dangerous – make it look better
- » Clock tower

5. Places to Stay and Eat

- » Start with something simple like an RV park or rustic cabins, once things begin to take off the maybe there will be a market for hotels and bed and breakfasts

WORD CARDS: NOW



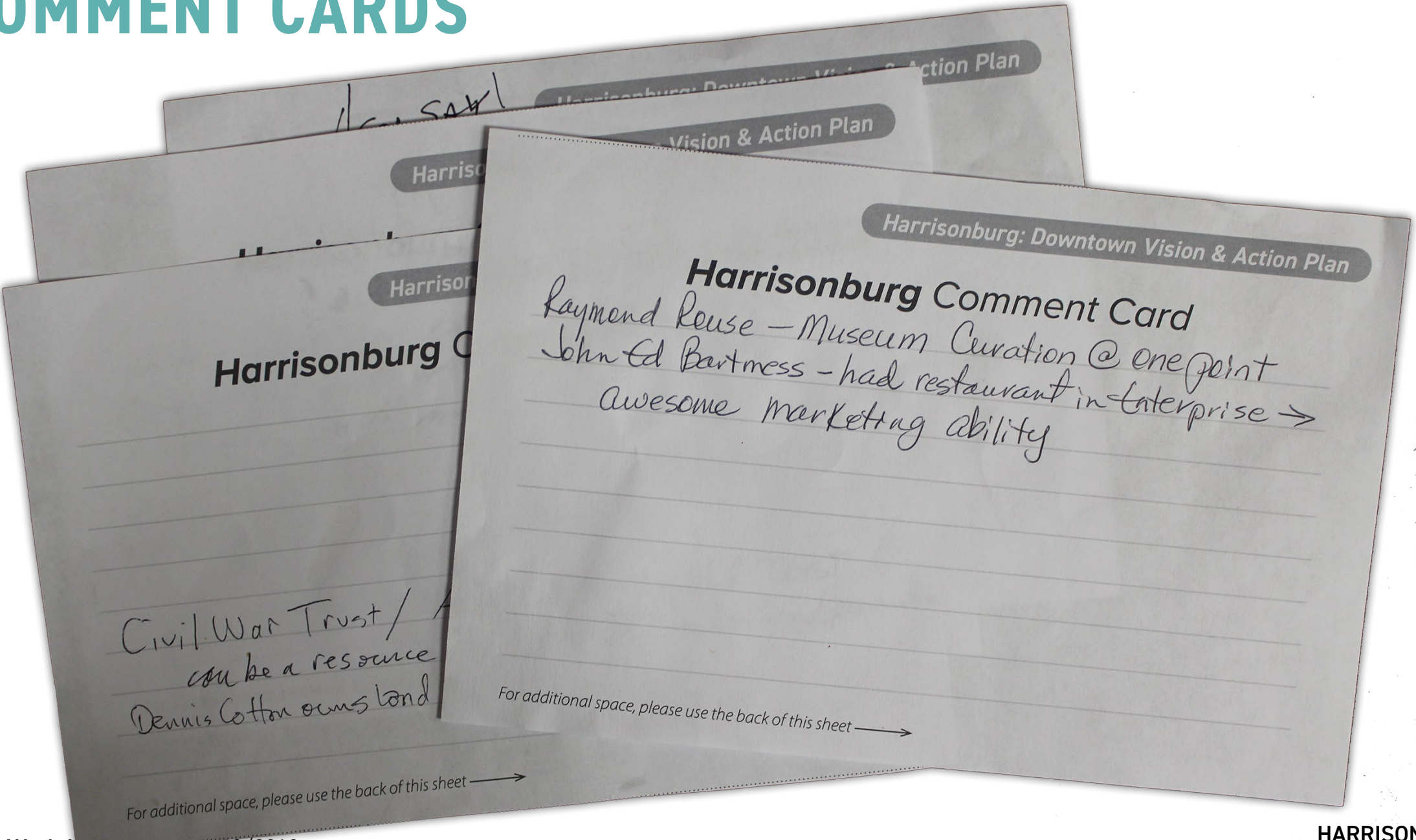
WORD CARDS: NOW



WORD CARDS: FUTURE



COMMENT CARDS



EXIT SURVEY

Harrisonburg: Downtown Vision & Action Plan

Visioning Session Exit Survey

1. Of the many ideas you heard today, which ones deserve further study and refinement? Why?

- Connecting our assets via trails is essential.
- Dev'ing ops for the river.
- Making better use of existing assets (old school).

2. Are there any ideas that were missed today?

- Increased educational opportunities locally - perhaps partnering w/ local school & high school.

3. Do you have any additional comments and concerns?

Love the energy -- our facilitator did a great job of keeping us on track & in wrapping the validity of all ideas.

For additional space, please use the back of this sheet.

Visioning Session

1. Of the many ideas you heard today, which ones deserve further study and refinement? Why?

Walking the Union Town

2. Are there any ideas that were missed today?

Reservoir Park & Land (in development) (supplies) Preschool 4-day week While there Creative art

3. Do you have any additional comments and concerns?

Love idea of individuals Focus on Create with adequate reduced energy

For additional space, please use the back of this sheet.

Visioning Session

1. Of the many ideas you heard today, which ones deserve further study and refinement? Why?

connectivity and feel of the acquisition place to place

2. Are there any ideas that were missed today?

3. Do you have any additional comments and concerns?

For additional space, please use the back of this sheet.

DOWNTOWN WALKING TOUR



DOWNTOWN WALKING TOUR



DOWNTOWN WALKING TOUR



DOWNTOWN WALKING TOUR



DOWNTOWN WALKING TOUR



DOWNTOWN WALKING TOUR



DOWNTOWN WALKING TOUR



DOWNTOWN WALKING TOUR



DOWNTOWN WALKING TOUR



BRAINSTORMING



INITIAL CONCEPTS



INITIAL CONCEPTS



INITIAL CONCEPTS



ADDITIONAL FIELD WORK



ADDITIONAL FIELD WORK



STAKEHOLDER INTERVIEWS



STAKEHOLDER INTERVIEWS



FINAL PRODUCTION



THE VISION

Branding/Marketing

Walking Trail

Sicily Street

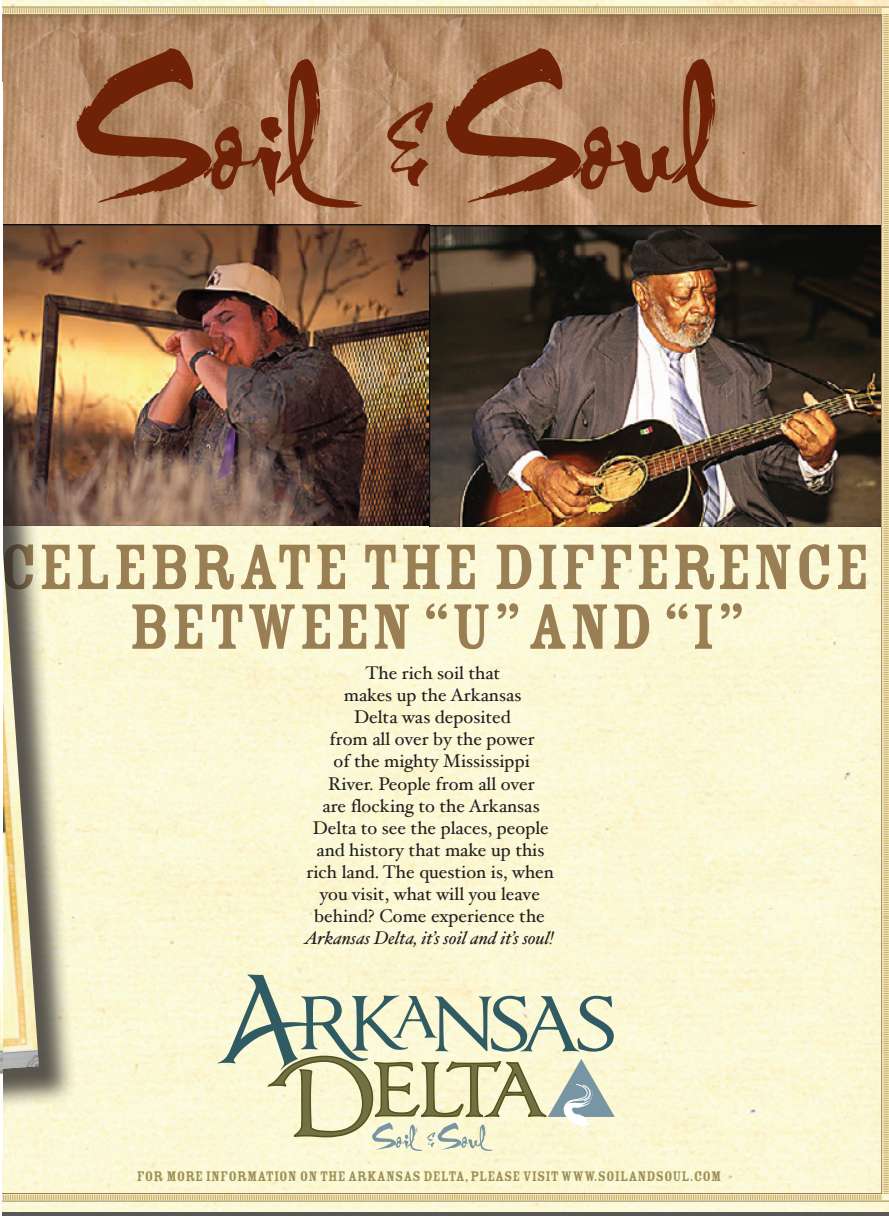
Riverfront Park

Fort Hill

Cemetery/Mounds

Farmer's Market/Sports Complex

BRANDING/MARKETING STRATEGY







It is
Great
to be

Opelousas



PANTONE
4695 C



PANTONE
188 C



PANTONE
179 C



PANTONE
153 C



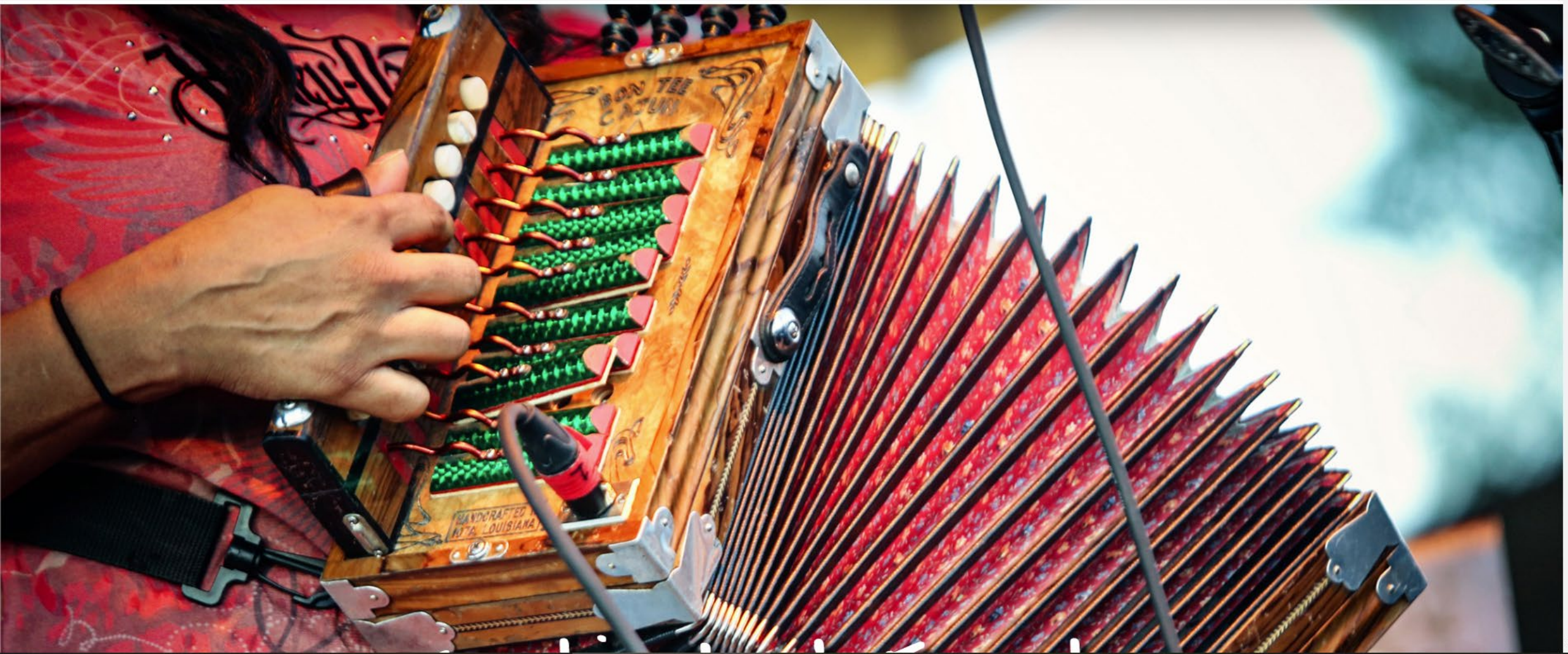
PANTONE
1615 C



PANTONE
385 C



PANTONE
7498 C

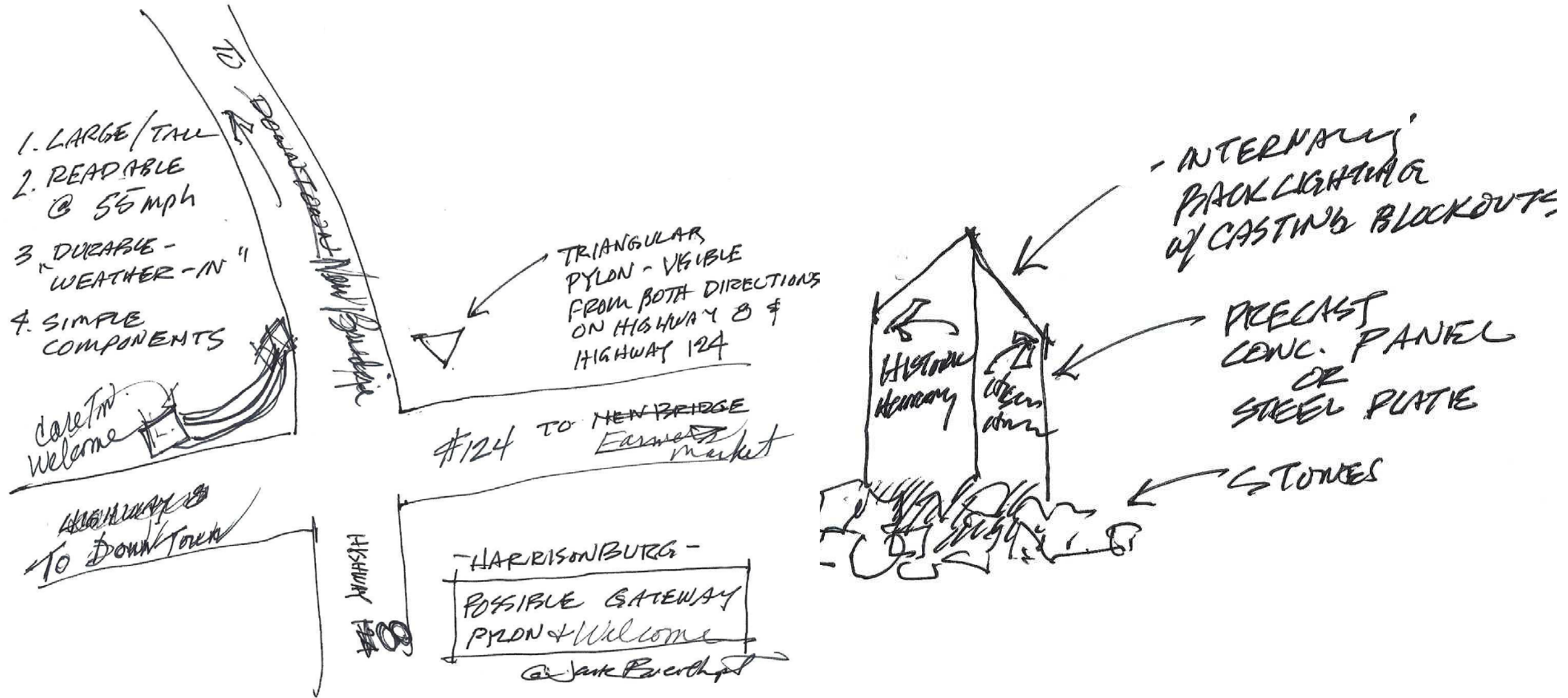




GATEWAY/ENTRANCE TO DOWNTOWN

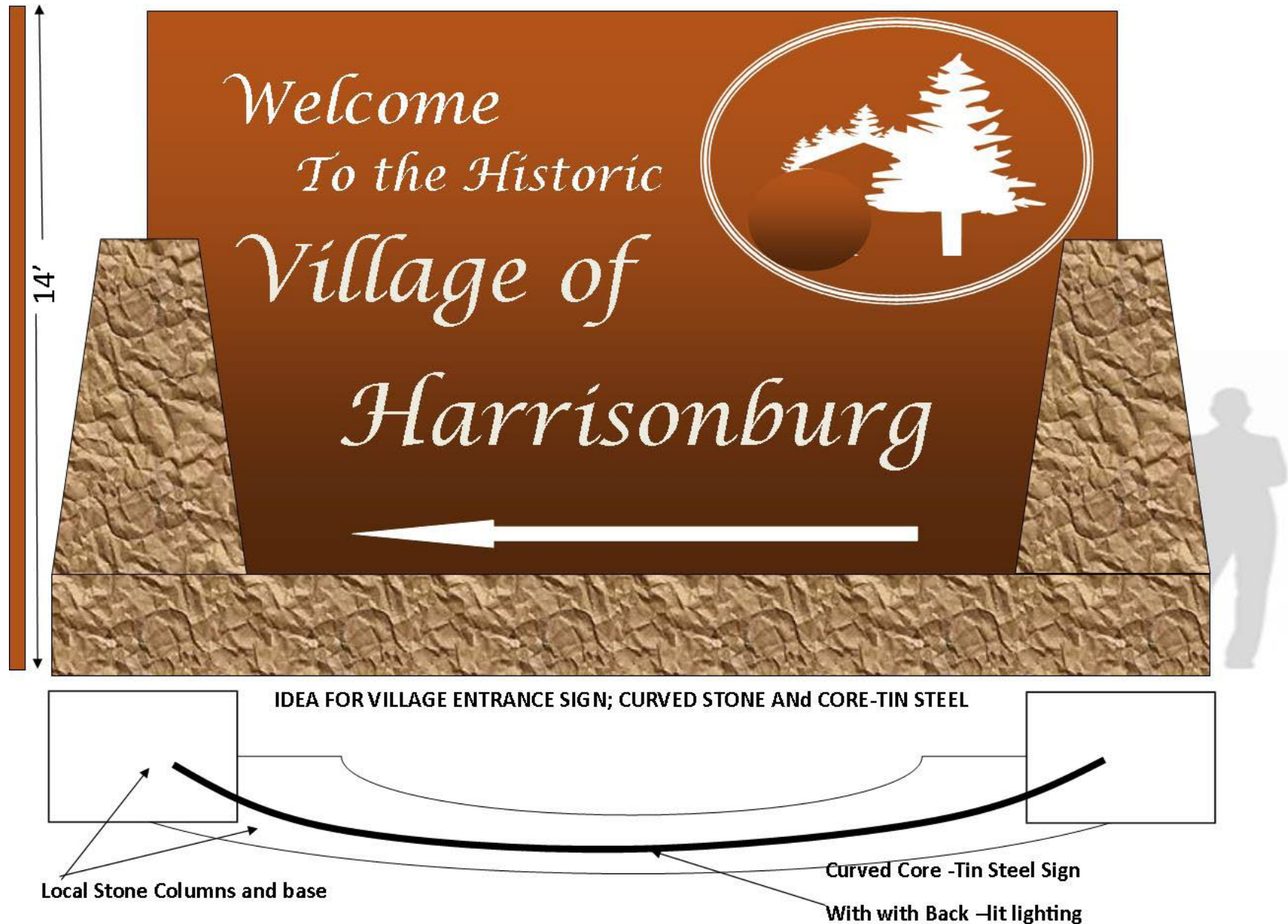


GATEWAY/ENTRANCE TO DOWNTOWN



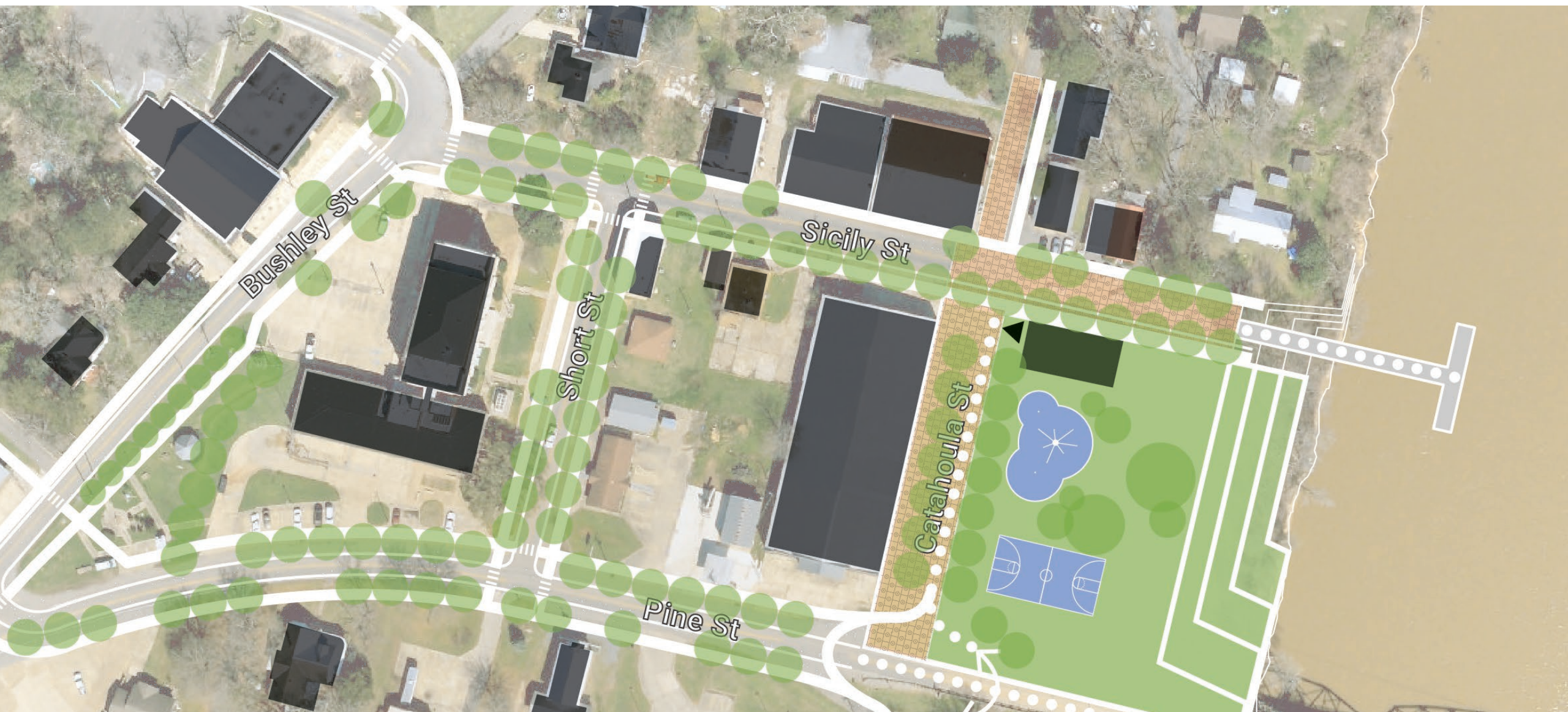
GATEWAY/ENTRANCE TO DOWNTOWN



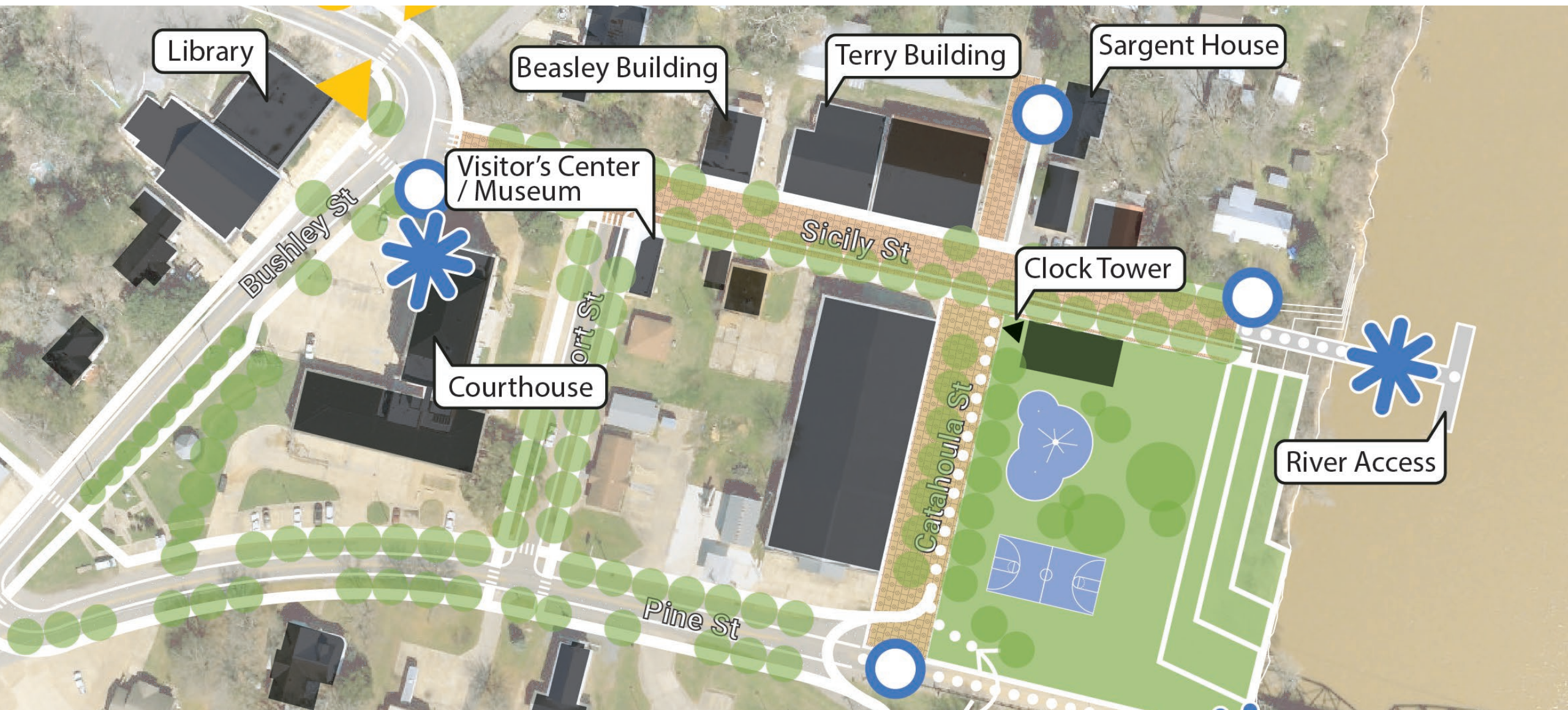




DOWNTOWN

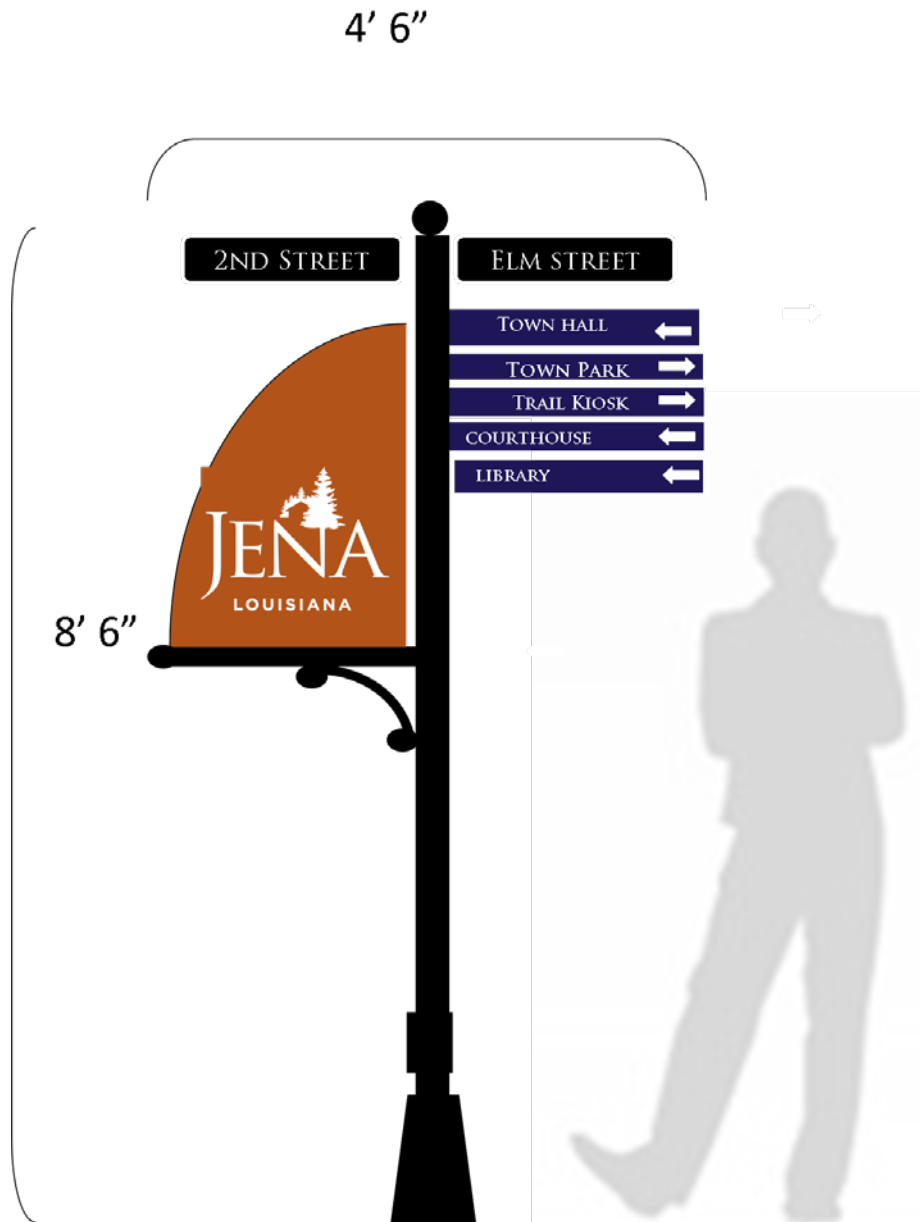


SICILY STREET



SICILY STREET





SICILY STREET



BEASLEY BUILDING

SICILY STREET



SICILY STREET



STATE BANK BUILDING



RANGED
TANGULAR AND FLAT-TOPPED. ASSOCIATED SMALL VIL-
LAGES WERE DISPERSED AROUND THESE CENTERS. THE
PLACE OF EACH INDIVIDUAL WITHIN SOCIETY WAS DE-
MINED BY A COMPLEX, STRATIFIED SOCIAL ORGANIZA-

THE MOST WIDESPREAD TYPE OF DECORATED POT-
AT THIS TIME WAS PLAQUEMINE BRUSHED.

Three Twisted, Mississippi River
Pottery



BY THE PLAQUEMINE PERIOD THE TROYVILLE MOUND
GROUP HAD GROWN TO CONSIST OF A LARGE MOUND
SURROUNDED BY TEN TO TWELVE SMALLER MOUNDS.
THE SITE WAS ENCLOSED BY A TEN-FOOT HIGH EARTH
EMBANKMENT.

THE EIGHTY-FOOT HIGH GREAT MOUND WAS A RECTANGU-
LAR, TWO-LEVEL STEPPED STRUCTURE, TOPPED BY A
CONE-SHAPED SUMMIT. THE CONSTRUCTION OF THE GREAT
MOUND TOOK PLACE IN SEVERAL STAGES. PRIOR TO THE
ADDITION OF THE CONE SUMMIT, THE FLAT SURFACE OF
THE LOWER TWO LEVELS MIGHT HAVE SUPPORTED
CHIEF'S HOUSE OR A TEMPLE.

TCHEFUNGE POTTERY IS SOFT AND POORLY COMPACTED.
COMMON VESSEL FORMS ARE OPEN BOWLS AND FOOTED
CYLINDRICAL AND SHOULDERED JARS. THESE POTTERY
VESSELS MAY BE EITHER PLAIN OR DECORATED IN A VARIETY
OF WAYS.





... ..
... ..
... ..
... ..
... ..
... ..



The Third and Last Battle
July 1864
The Battle of the Crater was a significant event in the American Civil War. It was the only battle in which a large mine was used to breach the enemy's defenses. The Union Army, under General Ulysses S. Grant, launched a surprise attack on the Confederate lines at Petersburg, Virginia. The mine was detonated, creating a large crater in the Confederate earthworks. The Union soldiers rushed into the crater, but they were met with intense fire from the Confederate forces. The battle ended in a tactical draw, but it was a significant morale boost for the Union Army.

58 Caliber Civil War Rifle
(Reproduction)

Union Infantryman
Pith of Remond



THE HARRISONBURG CEMETERY - Our cemetery is located on a beautiful green hillside, dotted with cedars and pines. It is an established fact that it is one of the state's oldest burial grounds. Graves of those born in the 17th century are there. It was formerly cared for by two of our distinguished citizens, namely Mr. P. P. Bates and Mr. C. F. Carter. With their passing and with the help of the Rotary Club, the cemetery was incorporated in 1955. Mr. H. A. Taliaferro and Mr. G. O. McGuffee are now in charge and the upkeep of the cemetery continues to move forward in these very capable hands.

CATAHOULA CHURCH - This is the oldest church in the Ouachita Association, founded in 1825. It does not have regular services, but a Memorial Day Service is held each year on the 2nd Sunday in May. An old cemetery surrounds it with graves dating back to its origin.



ROCK CANYON TRAIL - This is an unusual natural formation worth anyone's efforts to see it. Its canyon-like walls completely made of huge boulders reach 15 to 20 feet in height. Wildflowers and ferns of all kinds line the bed through which flows a sparkling creek. A small waterfall is included. A rustic outdoor classroom structure is available for use by nature students together with an Interpretive Nature Trail.

LAKEWOOD PARK - This park, which is now finished, is on a high bluff above a beautiful creek. The creek bed is filled with boulders of such lovely and perfect contours until it seems pre-historic people may have hewn them for their primitive construction. Some are large enough for family picnics. Wildflowers and native trees abound. Open all year and furnished with tables and benches for picnics. A gazebo for resting and relaxing is now also completed.



THE ELMER S. HARRISON HOUSE - This house for the blind was completed in 1902 for a Harrison family member and built that year. The Elmer Harrison died in 1901 and the property became the property of the Harrison family in 1902. It is now owned by one of the Harrison family. In 1902 it was purchased by the Harrison family. In 1902 it was purchased by the Harrison family. In 1902 it was purchased by the Harrison family.

METHODIST CHURCH - This church, built 1925, has a fine new sanctuary on it. It has been in use as a church since it was built and the sanctuary has been kept in excellent condition with the aid of the congregation. Services are held every Sunday.



SICILY STREET



SARGENT HOUSE

RIVERFRONT



RIVERFRONT PARK







COLUMBIA ON THE QUACHITA

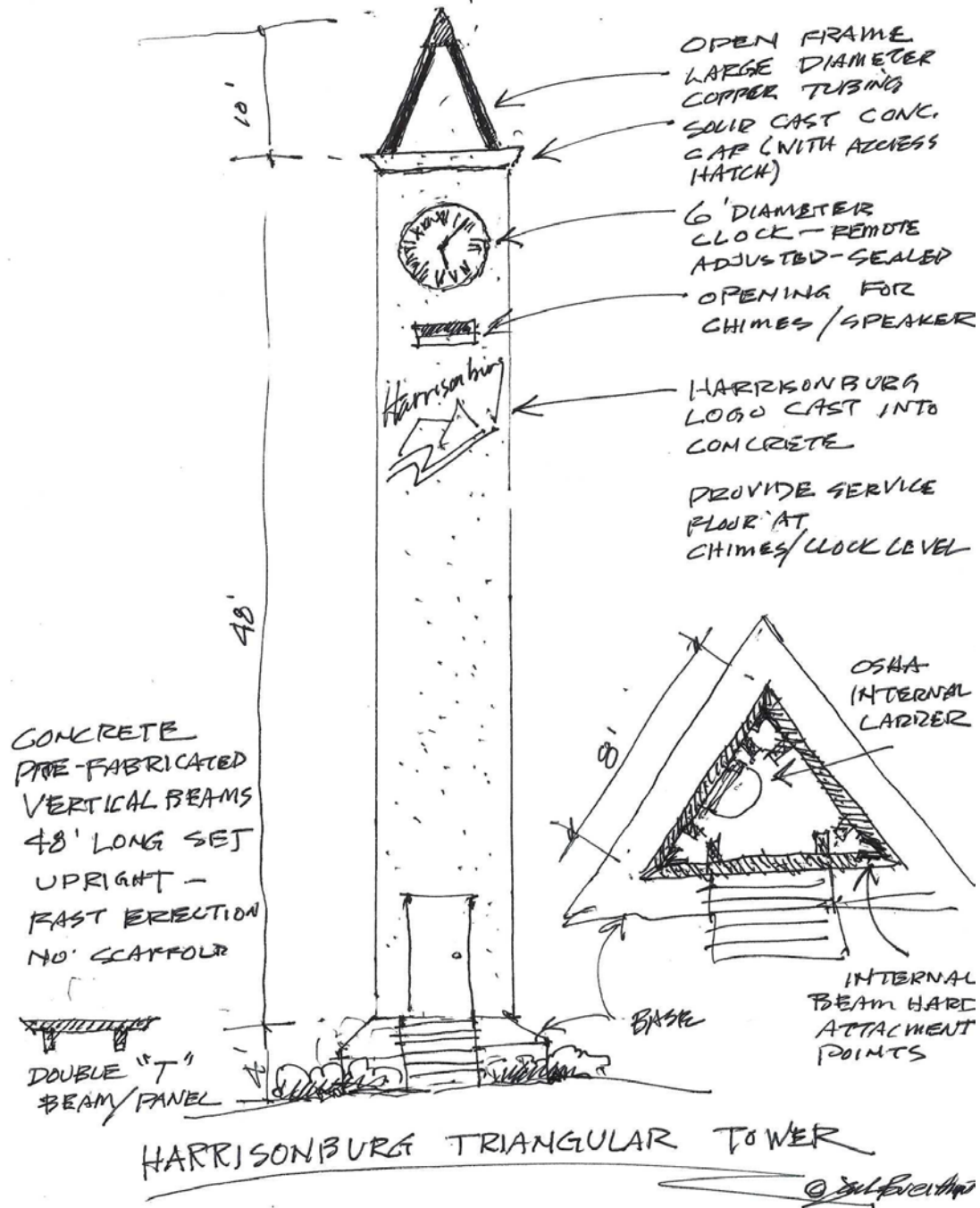
LONG-ALLEN BRIDGE

BUILT UNDER THE
ADMINISTRATIONS OF

GOV. HUEY P. LONG

GOV. DONALD DAVIS

PARANCE



SOUTH
ELEVATION

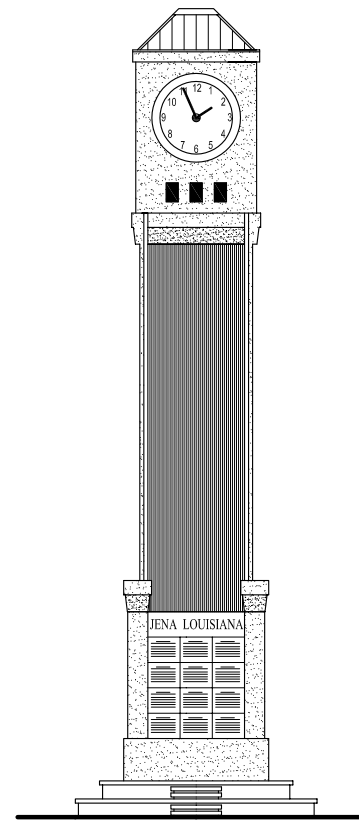
PHASE
SCHEMATIC

SCALE 1/8" INCH=1 FT.
DATE 12/1/2014

SHEET A-1

JENA MEMORIAL
TOWER
(PROPOSED)

atelier
BREITHAUPT
Architecture
Interior Architecture
Historic Preservation
P.O. Box 1
Rhinehart, Louisiana
318-992-7779













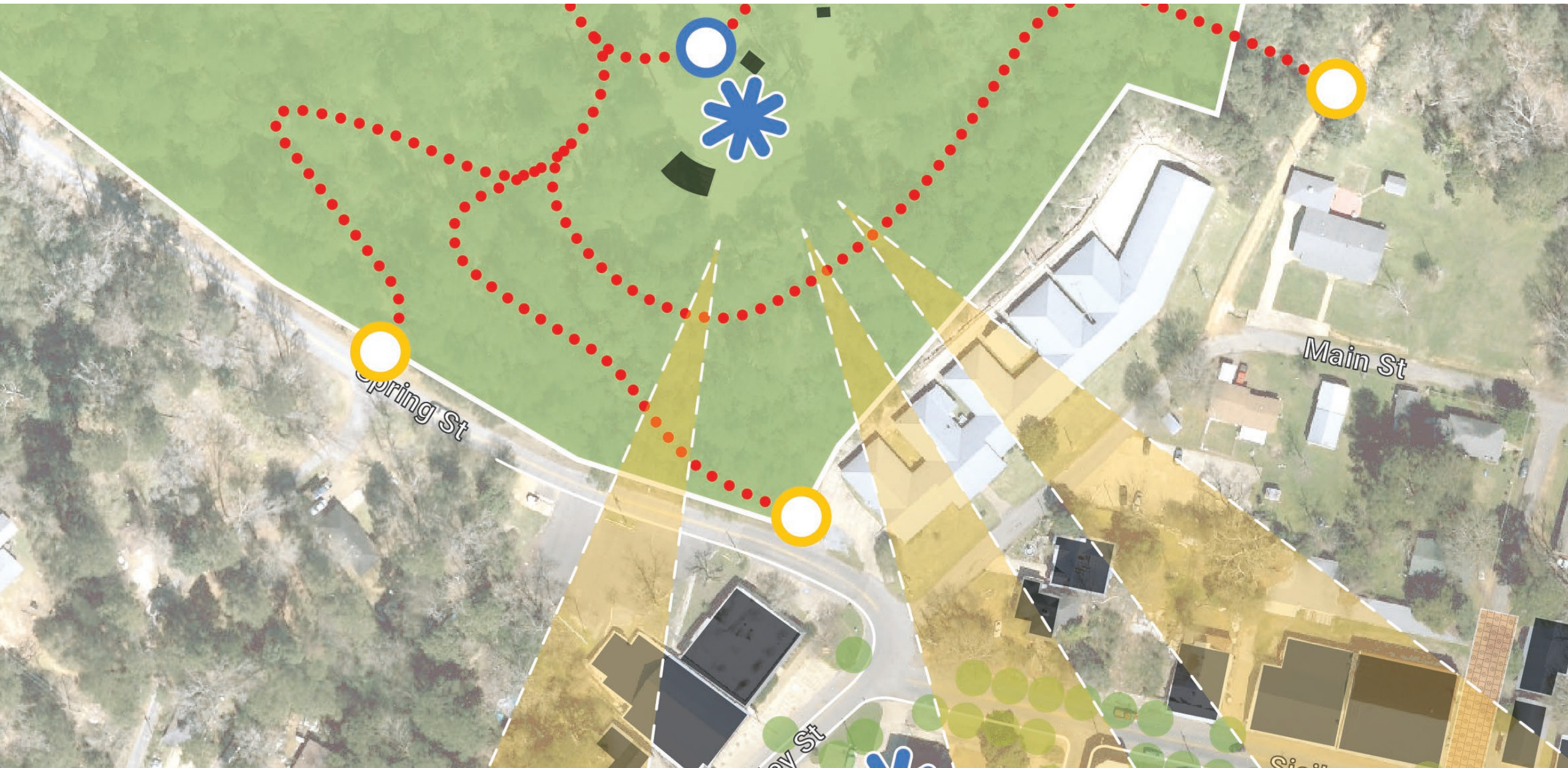


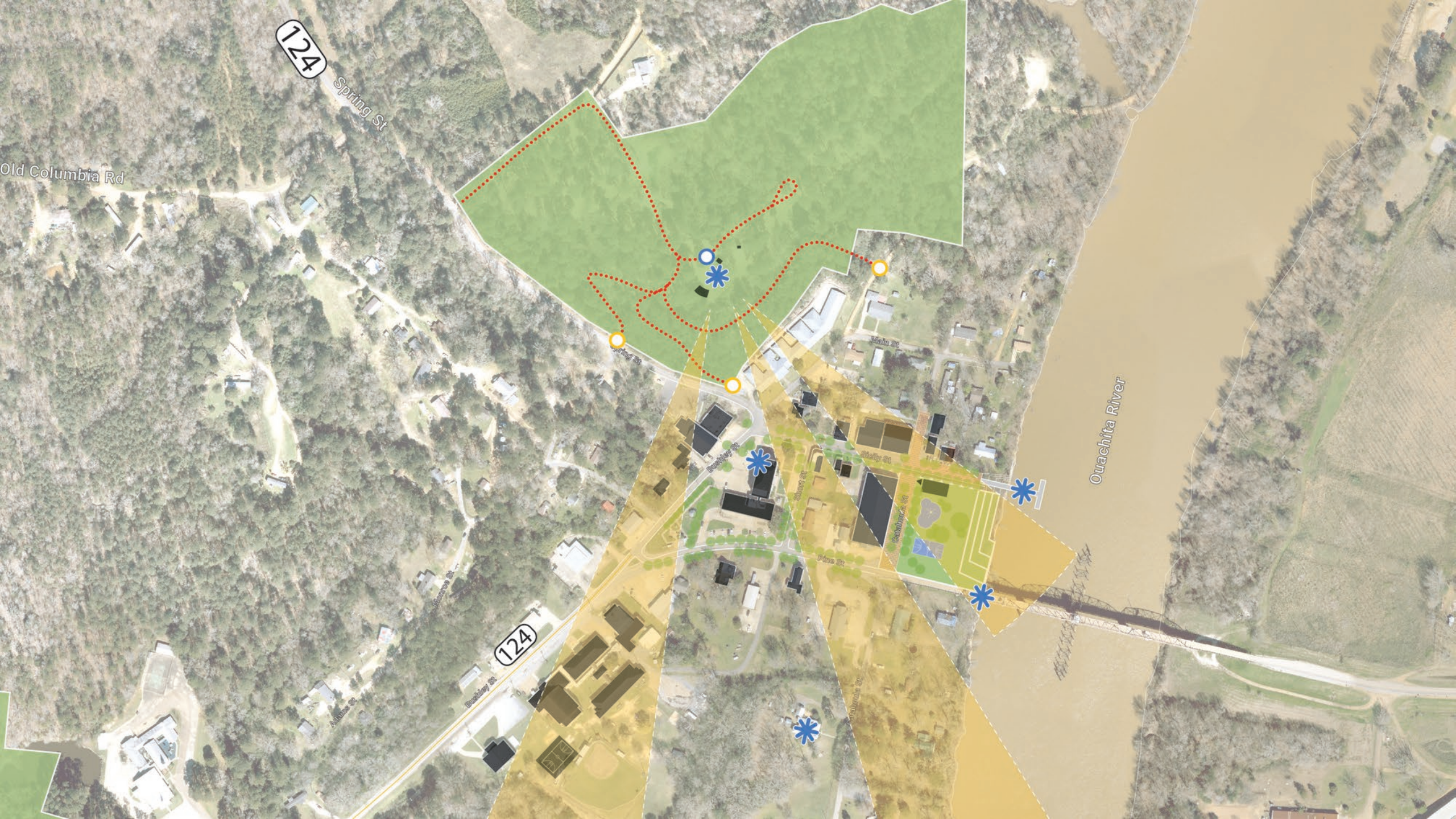






FORT HILL





124

Spring St

Old Columbia Rd

124

Buckeye St

Ashland St

Walnut St

Buckeye St

Pine St

Columbia St

Main St

Ouachita River





RIVER TRANSPORTATION

Transportation on the river has been an important part of the life of the community since the early days of settlement. The river has been a main artery for the movement of goods and people.

The river has been a main artery for the movement of goods and people. The river has been a main artery for the movement of goods and people. The river has been a main artery for the movement of goods and people. The river has been a main artery for the movement of goods and people.

The river has been a main artery for the movement of goods and people. The river has been a main artery for the movement of goods and people. The river has been a main artery for the movement of goods and people. The river has been a main artery for the movement of goods and people.

The river has been a main artery for the movement of goods and people. The river has been a main artery for the movement of goods and people. The river has been a main artery for the movement of goods and people. The river has been a main artery for the movement of goods and people.



SCHOOL



HARRISONBURG CEMETERY



HARRISONBURG CEMETERY



SPIRITS ON THE HILL



INDIAN MOUNDS

INDIAN MOUNDS OF NORTHEAST LOUISIANA

Mound Trail Legend

- Public Ancient Mounds Markers Site
- Private Ancient Mounds Markers Site
- Driving Trail Route
- Connecting Trail Route

Driving Trail Map

1. Click on **Driving Trail routes** below to zoom in
2. Select Mound site ● from enlarged map ▶



Mound Trail Regional Map

Welcome

Using this Guide

Download Printable File

Back to Trail Route Map

Harrisonburg Mounds

GPS Coordinates: Latitude: 31.768416 Longitude: -91.826

Driving Directions:

— In Harrisonburg, from the north on La 124 or east on La 8, head west on La 8/La 124/N Bushley Street. Go 0.3 mile to marker on left at Taliaferro Street.

— From the south on La 124 or west on La 8, head east on La 8/La 124/N Bushley Street. Go 0.1 mile to marker on right at Taliaferro Street.

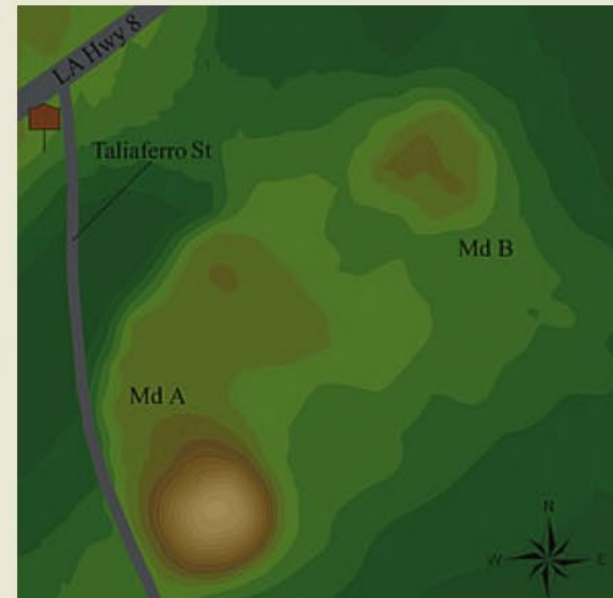
Number of Mounds: 2

Summer Viewing: Poor

Number of Visible Mounds: 1

Winter Viewing: Good

Harrisonburg comprises two mounds not far from the Ouachita River, in the modern community of Harrisonburg. The larger mound (Md. A) is conical, about 10 feet tall and 115 feet at its base, with a small family cemetery atop it. Coring shows it was built in a single stage. No material adequate for radiocarbon dating was recovered, but soil weathering and the presence of a few ceramics indicate it was probably built about AD 200 (Marksville period). The second mound (Md. B) wasn't identified until the 1990s. It's about 200 feet northeast of the larger mound and measures about 3 feet tall and 115 by 100 feet at the base. Coring shows it was also built in a single stage.



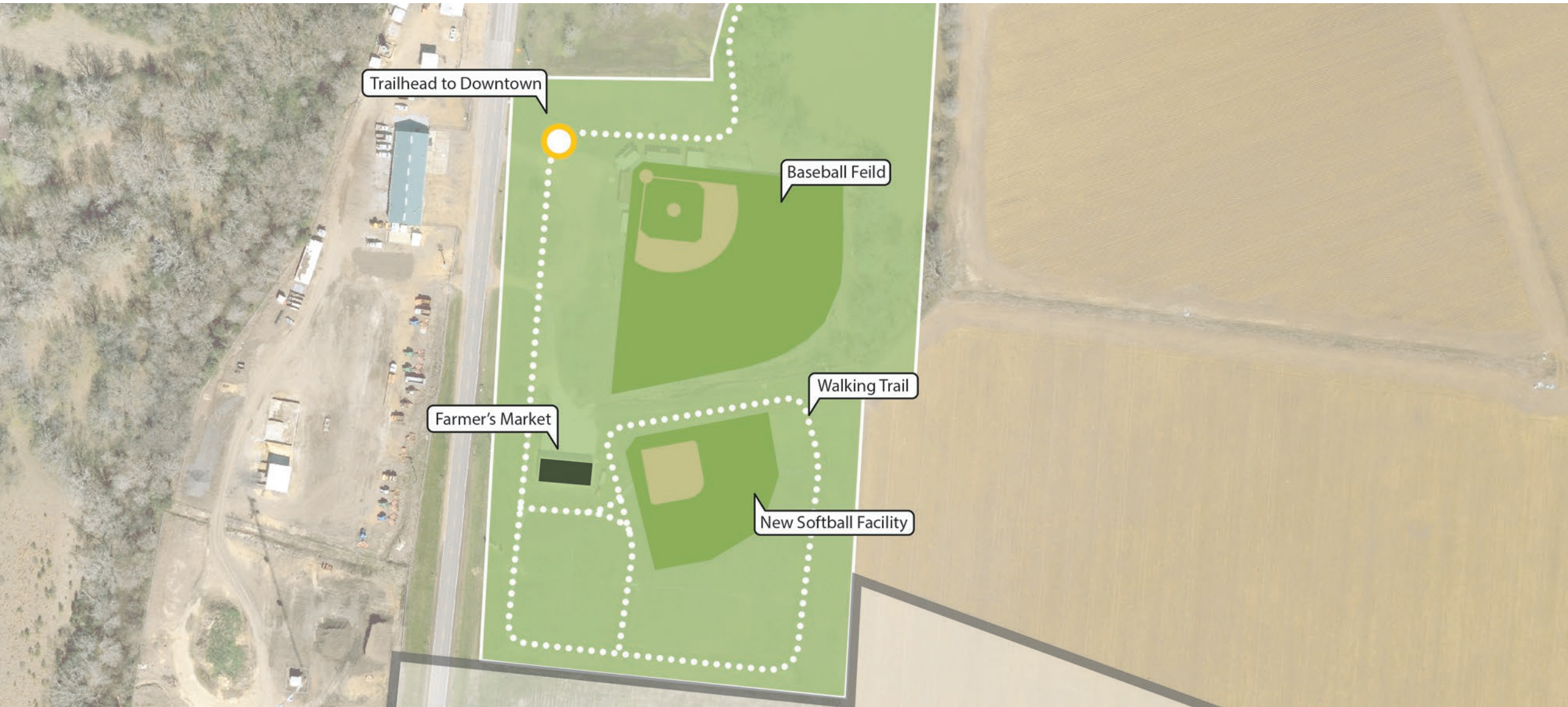
FARMER'S MARKET



FARMER'S MARKET



FARMER'S MARKET



ADDITIONAL IDEAS

- Old High School/Business Incubator
- Army Corps Landing/RV Park
- Business Park
- DOT Staging Area